



# Overview of the Irish table egg market - cost and pricing report (summary)

Price & Market Data Analysis  
18 July 2024

Understanding the sector's current state and future potential requires access to reliable and timely data. From the available public information, the following is a high-level overview of the sector in numbers:

- Total Hen Housing Capacity:** The most recent Agricultural Census completed in 2020 puts the total housing capacity for laying hens in the State at just over 5.1 million, with over 76% of that available capacity located in the border region (CSO classification).
- Active Hens and Egg Production:** Eurostat figures for the year 2022 estimate that the total laying hen population was in excess of 3.1 million for that year. Public data from 2022 suggests total egg production exceeds 1 billion annually (source: Eurostat), while information regarding sales indicate that over 600 million class A eggs are sold in Ireland each year.
- Sustainable Practices:** Bord Bia's Sustainable Egg Assurance Scheme (SEAS) currently has 14 certified egg packing centres.

This report aims to provide an overview of the Irish egg production sector using publicly available data from reputable sources, including:

- **Central Statistics Office (CSO):** The CSO provides various datasets on agricultural production, including data on laying hen numbers, egg production for human consumption and prices. (<https://www.cso.ie/en/statistics/agriculture/>)
- **Eurostat:** This European Commission platform offers data on egg production and prices for member states, allowing for regional comparisons. ([https://agriculture.ec.europa.eu/farming/animal-products/eggs\\_en](https://agriculture.ec.europa.eu/farming/animal-products/eggs_en))

While these sources offer valuable insights, it is crucial to acknowledge their limitations. Publicly available data may not capture the full picture, potentially lacking detailed information on production costs, farm-level practices, and specific egg types. Additionally, data collection methodologies and reporting frequencies can vary thus hindering comprehensive analysis and trend identification.

Despite these limitations, this report leverages available data to provide an overview of the Irish egg production sector. By acknowledging the constraints and interpreting the data cautiously, this report aims to contribute to understanding of this industry.

This report examines trends in the Irish egg production sector over the past decade (2014-2024). Data from established sources provides insights into industry dynamics.

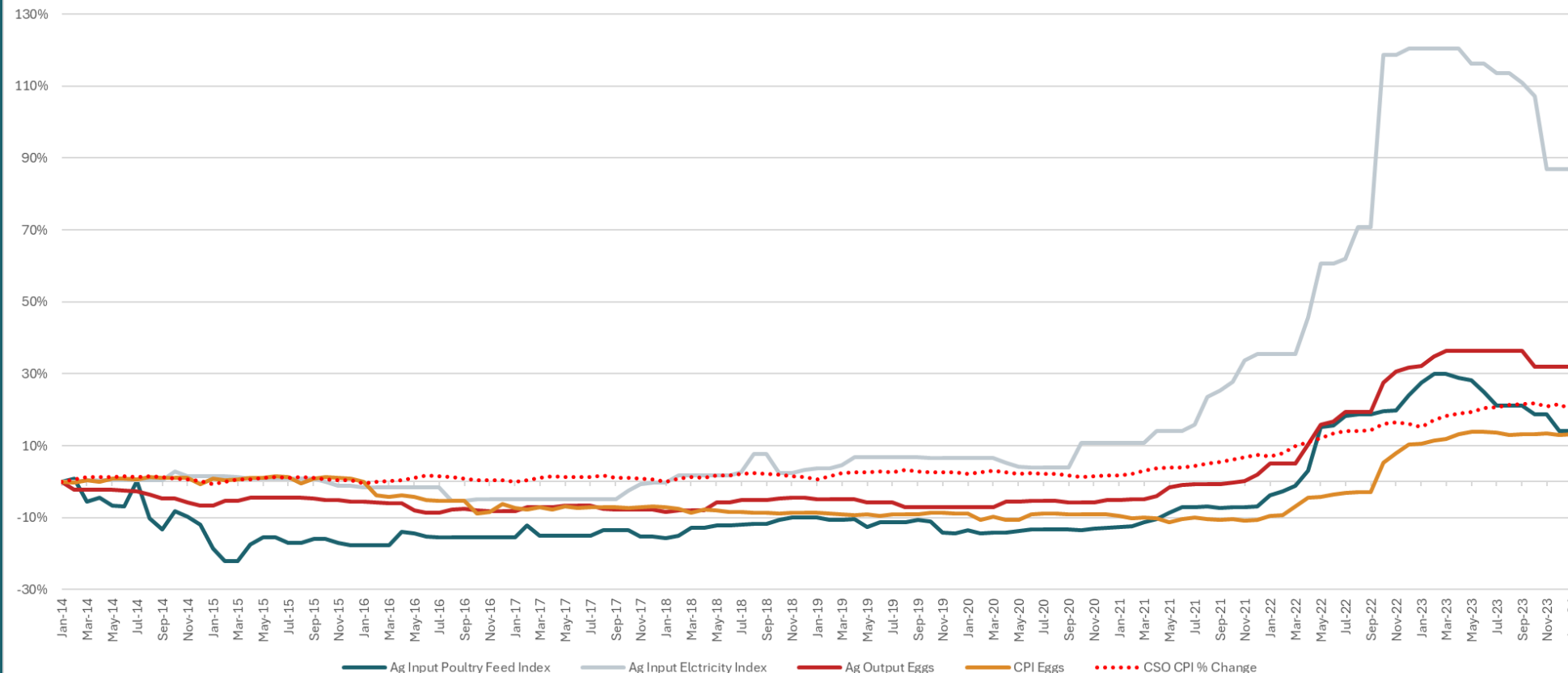
## **Indices**

- **Agricultural Input and Output Price Indices:** This data tracks fluctuations in the prices of poultry feed, electricity, and eggs (producer prices).
- **Consumer Price Index (CPI):** This data allows for a comparison of egg price changes to overall inflation in Ireland.

## **Recent Years in Focus:**

For the three and five year views (2021-2024 and 2019-2024), data submitted to the EU which is accessible through Eurostat (the statistical office of the European Union), is incorporated. This data contains Irish weekly submitted average egg prices, providing additional data on price movements within the Irish egg market. This report offers a review using the public data on the Irish egg production sector, focusing on both long-term trends and recent market activity.

This chart shows the trends in input and output indices for the Irish egg market using 2014 as a base year.

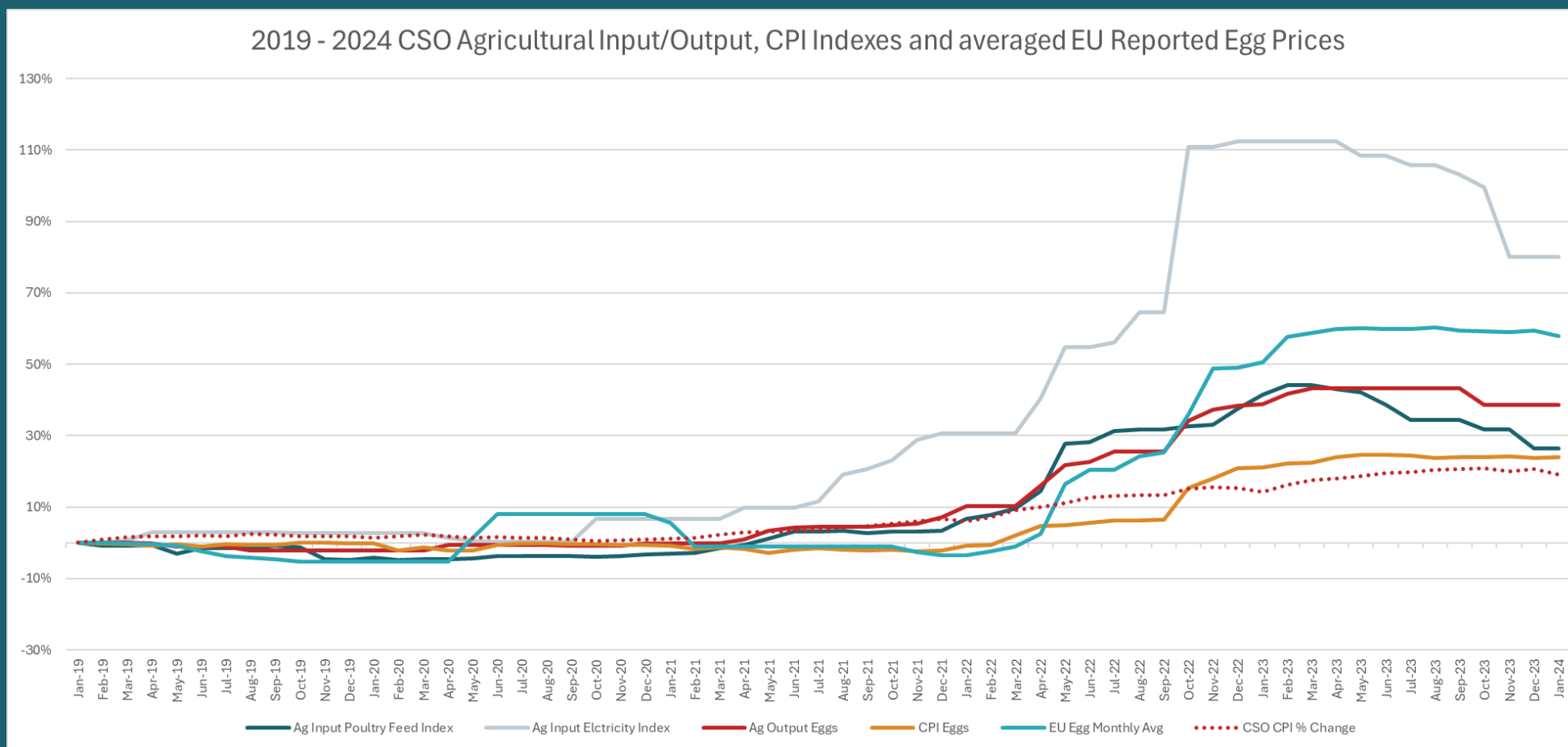


- Source: CSO, DAFM



# Inputs and Outputs in the Irish Egg Sector 2019-2024

This chart shows the trends in input and output indices for the Irish egg market using 2019 as a base year. EU market transparency prices are included for reference. This index measures wholesale prices for class A eggs from caged hens per 100kg.



- The price dynamics are similar to the 10-year view
- Relative to the 2019 base year, electricity rises to its highest in December 2022 at an over 110% increase
- Relative to the 2019 base year, poultry feed price increased by 43% at it's highest in February 2023
- The addition of the EU Market Transparency Price from 2017 allows us to track the EU reported price. We see that the overall rise in this price is 60% relative to the 2019 level, with nearly all of that rise coming in the period after April 2022



# 2019-2024 CSO Indices and EU Market Transparency Egg Prices

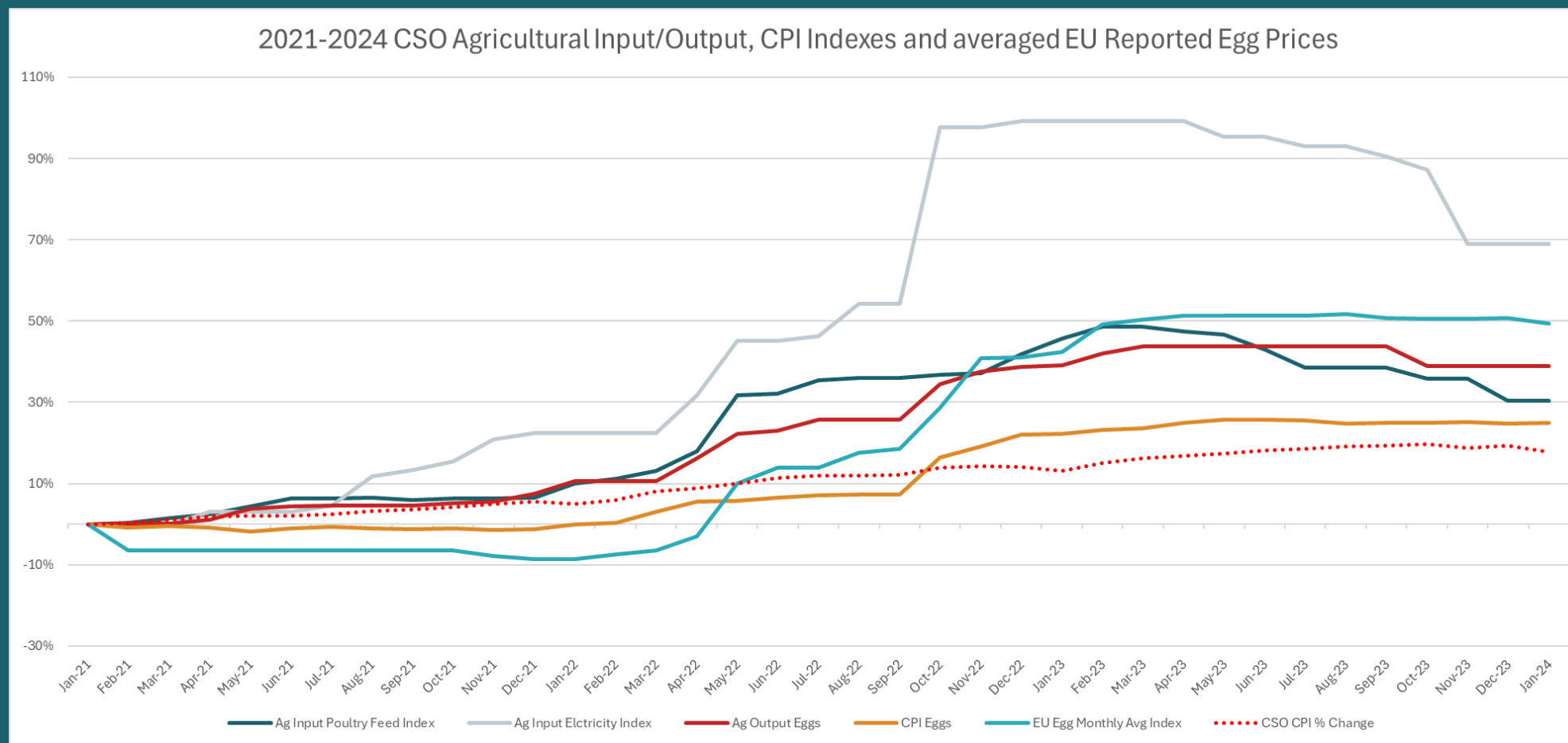
This table displays all changes for the period from 2019 to 2024. For this period, changes in the Irish wholesale egg price for caged eggs, as reported to the EU, are included for comparison. This wholesale price has been reported publicly since 2017. From August 2022 that reporting has also included average prices for barn, free range and organic eggs.

Date	CSO Ag Input Poultry Feed 2019	CSO Ag Input Poultry Feed 2020	CSO Ag Input Poultry Feed 2021	CSO Ag Input Poultry Feed 2022	CSO Ag Input Poultry Feed 2023	CSO Ag Input Electricity 2019	CSO Ag Input Electricity 2020	CSO Ag Input Electricity 2021	CSO Ag Input Electricity 2022	CSO Ag Input Electricity 2023	CSO Ag Output Eggs 2019	CSO Ag Output Eggs 2020	CSO Ag Output Eggs 2021	CSO Ag Output Eggs 2022	CSO Ag Output Eggs 2023	EU Egg Price Monthly Avg Index 2019	EU Egg Price Monthly Avg Index 2020	EU Egg Price Monthly Avg Index 2021	EU Egg Price Monthly Avg Index 2022	EU Egg Price Monthly Avg Index 2023	CPI Eggs 2019	CPI Eggs 2020	CPI Eggs 2021	CPI Eggs 2022	CPI Eggs 2023
Jan	0%	-4%	-3%	7%	41%	0%	3%	7%	31%	112%	0%	-2%	0%	10%	39%	0%	-5%	6%	-3%	51%	0%	0%	-1%	-1%	21%
Feb	-1%	-5%	-3%	8%	44%	0%	3%	7%	31%	112%	0%	-2%	0%	10%	42%	0%	-5%	-1%	-2%	58%	0%	-2%	-2%	-1%	22%
Mar	-1%	-5%	-2%	10%	44%	1%	3%	7%	31%	112%	0%	-2%	0%	10%	43%	0%	-5%	-1%	-1%	59%	0%	-1%	-1%	2%	23%
Apr	-1%	-5%	-1%	14%	43%	3%	1%	10%	40%	112%	0%	-1%	1%	16%	43%	0%	-5%	-1%	3%	60%	-1%	-2%	-2%	5%	24%
May	-3%	-4%	1%	28%	42%	3%	0%	10%	55%	108%	-1%	-1%	3%	22%	43%	-1%	1%	-1%	16%	60%	0%	-2%	-3%	5%	25%
Jun	-2%	-4%	3%	28%	39%	3%	0%	10%	55%	108%	-1%	-1%	4%	23%	43%	-2%	8%	-1%	20%	60%	-1%	0%	-2%	6%	25%
Jul	-2%	-4%	3%	31%	34%	3%	0%	12%	56%	106%	-1%	-1%	4%	26%	43%	-4%	8%	-1%	20%	60%	0%	0%	-1%	6%	25%
Aug	-1%	-4%	3%	32%	34%	3%	0%	19%	65%	106%	-2%	-1%	4%	26%	43%	-4%	8%	-1%	24%	60%	0%	0%	-2%	6%	24%
Sep	-1%	-4%	3%	32%	34%	3%	0%	21%	65%	103%	-2%	-1%	4%	26%	43%	-5%	8%	-1%	25%	59%	0%	0%	-2%	6%	24%
Oct	-1%	-4%	3%	33%	32%	3%	7%	23%	111%	100%	-2%	-1%	5%	34%	39%	-5%	8%	-1%	36%	59%	0%	0%	-2%	15%	24%
Nov	-5%	-4%	3%	33%	32%	3%	7%	29%	111%	80%	-2%	-1%	5%	37%	39%	-5%	8%	-2%	49%	59%	0%	0%	-2%	18%	24%
Dec	-5%	-3%	3%	38%	27%	3%	7%	31%	112%	80%	-2%	0%	7%	38%	39%	-5%	8%	-3%	49%	59%	0%	0%	-2%	21%	24%



# Inputs and Outputs in the Irish Egg Sector 2021-2024

This chart shows the trends in input and output indices for the Irish egg market using 2021 as a base year.



- We see a steady rise in poultry feed up to December 2021, until a sharp increase of 25% in 5 months, relative to 2021 levels
- That sharp increase is repeated three times in the electricity index, from June 21 to March 22, from March 22 to September 22 and from September 22 to December 22. These jumps meant electricity prices double relative to January 2021 levels come December 2022
- While the agricultural output index has also seen a considerable rise, increasing 40% on 2021 levels, it hasn't seen those short bursts in prices as compared to the input indices
- Prices paid by consumers for eggs remained relatively flat until Feb 22 before increasing 25% to Jan 2024



# 2021-2024 CSO Indices and EU Market Transparency Egg Prices

This table displays all changes for the 3-year period from 2021 to 2024. For this period, changes in the Irish wholesale egg price for caged eggs as reported to the EU are included for comparison.

Date	CSO Ag Input Poultry Feed 2021	CSO Ag Input Poultry Feed 2022	CSO Ag Input Poultry Feed 2023	CSO Ag Input Electricity 2021	CSO Ag Input Electricity 2022	CSO Ag Input Electricity 2023	CSO Ag Output Eggs 2021	CSO Ag Output Eggs 2022	CSO Ag Output Eggs 2023	EU Egg Price Monthly Avg Index 2021	EU Egg Price Monthly Avg Index 2022	EU Egg Price Monthly Avg Index 2023	CPI Eggs 2021	CPI Eggs 2022	CPI Eggs 2023
Jan	0%	10%	46%	0%	22%	99%	0%	11%	39%	0%	-9%	42%	0%	0%	22%
Feb	0%	11%	49%	0%	22%	99%	0%	11%	42%	-6%	-8%	49%	-1%	0%	23%
Mar	2%	13%	49%	0%	22%	99%	0%	11%	44%	-6%	-6%	50%	0%	3%	24%
Apr	3%	18%	47%	3%	32%	99%	1%	16%	44%	-6%	-3%	51%	-1%	6%	25%
May	4%	32%	47%	3%	45%	95%	4%	22%	44%	-6%	10%	51%	-2%	6%	26%
Jun	6%	32%	43%	3%	45%	95%	4%	23%	44%	-6%	14%	51%	-1%	6%	26%
Jul	6%	35%	39%	5%	46%	93%	5%	26%	44%	-6%	14%	51%	-1%	7%	26%
Aug	7%	36%	39%	12%	54%	93%	5%	26%	44%	-6%	18%	52%	-1%	7%	25%
Sep	6%	36%	39%	13%	54%	91%	5%	26%	44%	-6%	19%	51%	-1%	7%	25%
Oct	6%	37%	36%	15%	98%	87%	5%	34%	39%	-6%	29%	51%	-1%	16%	25%
Nov	6%	37%	36%	21%	98%	69%	6%	38%	39%	-8%	41%	51%	-1%	19%	25%
Dec	7%	42%	30%	22%	99%	69%	8%	39%	39%	-9%	41%	51%	-1%	22%	25%





An Rialálaí Agraibhia  
Agri-Food Regulator

Please visit [www.agrifoodregulator.ie](http://www.agrifoodregulator.ie) and follow us  
on our social channels.

 [LinkedIn: @An Rialálaí Agraibhia | Agri-Food Regulator](#)  [Facebook: @ An Rialálaí Agraibhia | Agri-Food Regulator](#)

 [X: @agrifoodreg](#)  [Youtube: @agrifoodregulator](#)